

MONTHLY MEMBERSHIP PROGRESS REPORT

District 7 I

Results as of: 3/31/2026

GMT:

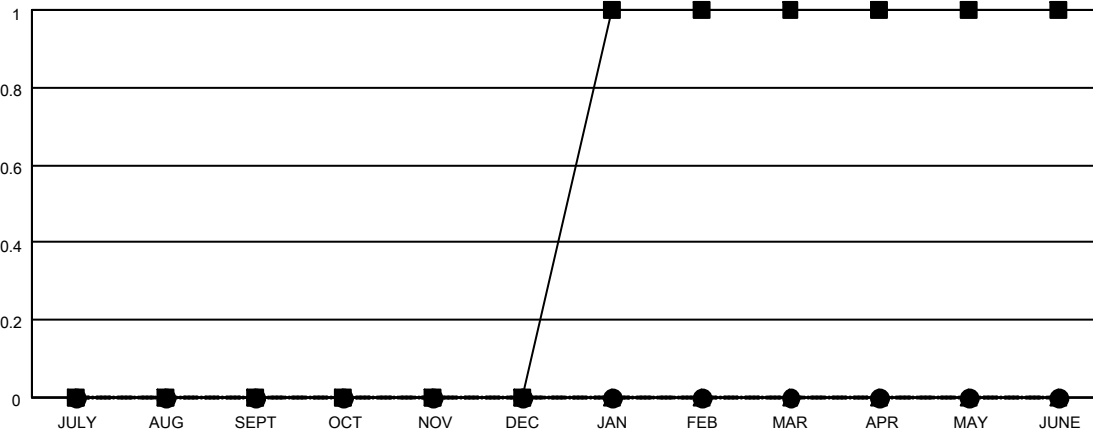
LOCATION ARKANSAS

GMT CA

Clubs			
RESULTS FOR 2025-2026			
QUARTER	NEW CLUB GOAL	NEW CLUBS	DROPPED CLUBS
JULY/AUG/SEPT	0	0	0
OCT/NOV/DEC	0	0	0
JAN/FEB/MAR	1	0	0
APR/MAY/JUNE	0	0	0

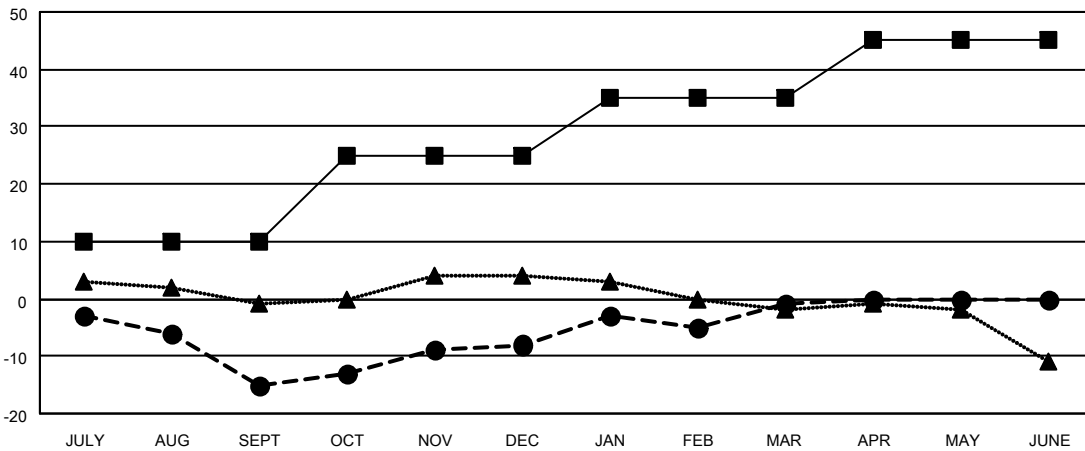
Members			
RESULTS FOR 2025-2026			
QUARTER	MEMBER GROWTH NET GOAL	MEMBER GROWTH ACTUAL	DROPPED MEMBERS ACTUAL (including transfers)
JULY/AUG/SEPT	10	13	27
OCT/NOV/DEC	15	18	10
JAN/FEB/MAR	10	17	9
APR/MAY/JUNE	10	0	0

GOALS AND ACTUAL NEW CLUBS CUMULATIVE



- - CURRENT YEAR GOALS FOR NEW CLUBS
- - CURRENT YEAR ACTUAL NEW CLUBS
- ▲ - LAST YEAR ACTUAL NEW CLUBS

GOALS AND ACTUAL MEMBERS CUMULATIVE



- - MEMBER GROWTH NET GOAL
- - MEMBER GROWTH ACTUAL
- ▲ - LAST YEAR MEMBERSHIP ACTUAL

DROPPED CLUBS: 0	15 CLUBS OF 30 ADDED 1 OR MORE NEW MEMBERS	GENDER DISTRIBUTION MALE 355 (61.63%) FEMALE 221 (38.37%)
DROPPED MEMBERS DECEASED 7 CLUB CANCELLED 0 OTHER 39 TOTAL 46	CLICK HERE FOR CUMULATIVE MEMBERSHIP DATA	TOTAL FAMILY UNIT MEMBERS 61 FAMILY MEMBERS PAYING HALF DUES 31